

PRICES IN EFFECT UNTIL JULY 19, 2020



Canada's **Building** Centre®

[kingdontimbermart.ca](http://kingdontimbermart.ca)

**HOT**  
*Summer*  
**DEALS!**

**Top Soil**

Premium blend of  
CQA-certified compost  
and top soil. 25 L bag.

#9292343

**2<sup>97</sup>**



**Husqvarna  
435 e-series  
Chainsaw**

16" bar. 2.2 hp.  
#867650801

**319<sup>97</sup>**



**6 Cu. Ft.  
Wheelbarrow**

Powder coated steel  
tray. 180 kg loading  
capacity. #9090366

**49<sup>97</sup>**



**NEW STORE**  
*Now Open*

On the corner of Buckhorn Road and the 8th Line in Lakefield  
Come in today and shop our  
**larger selection!**

Check out our **online** BACKYARD FEATURE  
at [timbermart.ca](http://timbermart.ca) or *flipp* or *reebee*



Canada's Building Centre

# Build A Deck



**We Can Help!**  
Deck & Backyard Project Guide, Deck or Fence Projects worksheet, all available in-store.



We Are Your Source For  
**Trex**  
Composite Decking

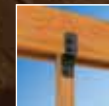
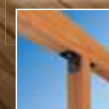
The peace of mind that comes with Trex:

- Won't rot, split, splinter or crack
- Insect proof
- Fade resistant
- Available in a wide range of colours
- All the natural beauty of wood with none of the work

Check your local TIMBER MART for selection and pricing.

## Pressure Treated Lumber

5/4" x 6" x 8' 5468TB.....	<b>6<sup>61</sup></b>
2" x 4" x 8' 248TB.....	<b>5<sup>95</sup></b>
2" x 6" x 8' 268TB.....	<b>8<sup>35</sup></b>
2" x 8" x 8' 268TB.....	<b>8<sup>35</sup></b>
4" x 4" x 8' 448TB.....	<b>10<sup>99</sup></b>



### Strengthen Your Structures with Outdoor Accents® Hardware

With the Outdoor Accents Avant Collection™, a new line of decorative wood connectors and fasteners from Simpson Strong-Tie, you can bring both elegant design and structural strength to your outdoor living areas. This versatile hardware accommodates nominal and rough lumber sizes, providing the flexibility you need when designing and building custom outdoor structures.



## More Nuvo Iron Square Balusters

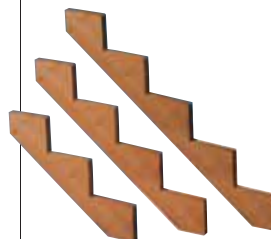
Lumber and post caps sold separately.  
Box of 10.

**32" Baluster** **24<sup>97</sup>**  
O#7566003

**36" Baluster** **27<sup>97</sup>**  
O#7566011

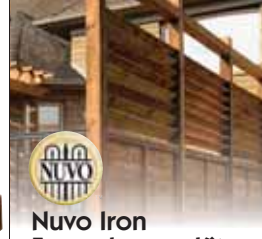


**Privacy Plus Pressure Treated Lattice**  
4' x 8' panel. 48LPPB  
**23<sup>59</sup>**



### Pressure Treated Stair Stringers

High grade lumber.  
**3 Step 3SSSB..... 11<sup>49</sup>**  
**4 Step 4SSSB..... 15<sup>29</sup>**  
**5 Step 5SSSB..... 19<sup>19</sup>**



### Nuvo Iron Fence Louver Kit

Kit includes hardware for 11 fence boards and stainless steel screws. Fence boards not included. Easy to install.  
#LSB48

**19<sup>97</sup>**



**Makita**  
**7-1/4" Circular Saw**  
15A. 5800 RPM. Includes 7-1/4" 24T carbide tipped blade. #5007NB

**118<sup>97</sup>**



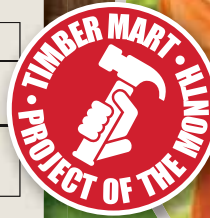
Use your TIMBER MART card and **Do Not Pay For 6 Months\***

\* (O.A.C.) At participating locations only. See page 7 for details.

# Pressure Treated Fencing

A well-designed fence adds privacy, style and safety to your property. TIMBER MART stores have everything you need to build the perfect fence to suit your home and neighbourhood.

FENCE BOARD SIZE	PRICE
1" x 6" x 5' 165TB	<b>2<sup>91</sup></b>
1" x 6" x 6' 166TB	<b>3<sup>49</sup></b>



**RELIABLE FASTENERS**  
**PWR DRIVE STR**  
 Dimensional Lumber Structural Screw  
 Ideal For Deck Framing

The design of the STR is specific to dimensional lumber used in deck structures and any other framing needs, which allows maximum assembly strength. By figuring out all the possible assemblies of a structure, using a mix of 2" x 6", 2" x 8", 2" x 10", 4" x 4", and 6" x 6", you can cover all possible combinations with only five different lengths of the STR. Fewer screws are necessary to cover anything you may encounter on the jobsite. Each pack of STR includes a handy reference for the correct lumber combinations ideal for a specific length plus the required T-40 bit.



**Milwaukee**  
**M18™ Compact**  
**Brushless Hammer**  
**Drill/Brushless**  
**Impact Combo Kit**  
 Includes battery, charger,  
 and carry case. #2799-22CX  
**349<sup>97</sup>**



**TIMBER MART**  
**Concrete Mix**  
 25 kg bag. #HCM  
**4<sup>29</sup>**



**Gate Combo Kit**  
 Includes two 6" T-hinges,  
 latch, handle, hardware.  
 Black. O#3247780  
**14<sup>97</sup>**



**28" Square Foot**  
**Concrete Footing**  
 8", 10" or 12". #SF28  
**27<sup>97</sup>**

**Vulcan**  
**Post Hole**  
**Digger**  
 0 - 2-7/8"  
 jaw capacity.  
 48" steel  
 handle.  
 O#5320049  
**52<sup>97</sup>**



**TRIPLE H**  
**BROOKLIN**  
**CONCRETE PRODUCTS**  
**24" x 24"**  
**Patio Stone**

Concrete patio stones for walkways and patios will look great for decades to come. Diamond pattern in Natural. Selection may vary by store location. Each. #SS24

**5<sup>97</sup>**

**You Could WIN**  
 Up To  
**\$5,000\***  
 Toward Your Enclosure With

**Sunroom Solutions**  
 BRINGING THE OUTDOORS INDOORS

Purchase a Vinyl Pane Window Enclosure with your TIMBER MART Credit Card until September 6, 2020



To find out how you can win your enclosure visit [timbermart.ca/sunroom](http://timbermart.ca/sunroom)

Scan QR code on page 6 to apply for a TIMBER MART credit card.  
 \*Installation not included.




**Show Both Cards, Get More AIR MILES® Reward Miles** See page 7 for details.



Canada's Building Centre

## WE CAN HELP!

Choosing the right material for your Siding or Roofing project can be confusing. Our Experts can help you select the right material for your home and your budget.



### Everest 42" Laminate Asphalt Shingles

LIFETIME WARRANTY

11 stock colours. Bundle covers 32.9 sq. ft. #BPEAB

# 23<sup>79</sup>

**GENTEK KAYCAN**

## Dark Colour Vinyl Siding



Deep, dark, fade-resistant colours. D4.5 Gentek Sequoia Dutchlap; Kaycan D4 Bevel or D4 Dutchlap DaVinci. Colour is present throughout. Brand selection may vary. Priced per piece.

# 13<sup>97</sup>



## Pre-Painted Residential & Agricultural Steel Roofing

TIMBER MART supplies a variety of exterior building solutions specifically designed to improve the aesthetics of your home, cottage or agricultural building. We can help you achieve your design vision with our easy-to-install and workable products. So whatever look you are trying to achieve, TIMBER MART has the combination of roofing and exterior solutions to get you there! Check with your local TIMBER MART for competitive pricing. May be special order at some locations. Colours may vary.



**GENTEK KAYCAN**

### Aluminum Soffit & Fascia

White or colours. Brand selection may vary.

16" x 12' Soffit  
Vented. Per piece.  
#SOFVWHD.....

# 18<sup>97</sup>

6" x 9' 10" Fascia  
Ribbed face. Per  
piece. #FAS6WH...

# 15<sup>97</sup>



### Tyvek Tyvek Homewrap

9' x 100'. Breathable,  
allows moisture vapour  
through. Energy efficient.  
Per roll. #TYV

# 109<sup>95</sup>



### DUPONT DuPont Roof Protector Synthetic Underlay

42" x 286'. 1,001 sq. ft.  
20 lb. roll. #RESISTOR

# 79<sup>97</sup>



### Window & Door Flashing

Self-adhesive. 6" x 54'.  
#1116508

# 32<sup>97</sup>



### Garant Roofers Spade

One-piece  
head. D-handle.  
Slides well on  
roof framing.  
O#7077092

# 39<sup>97</sup>



### Makita Roofing Nailers

65 - 120 PSI. 1-3/4".  
15° round head. #AN453

# 329<sup>97</sup>



LOUISVILLE

### 20' Fibreglass Extension Ladder

Nonconductive.  
Extra heavy-duty,  
industrial. 300 lb.  
load capacity.  
O#0394221

# 259<sup>97</sup>



Use your TIMBER MART card and Do Not Pay For 6 Months\*

\* (O.A.C.) At participating locations only. See page 7 for details.

# Door Exchange

We have the biggest selection of interior doors

It's fast, easy and can save you up to 75% of the cost to replace your interior doors the old fashion way.

**STEP 1** Remove the door from the hinge by knocking out the hinge pin. This is easiest to do with two people.

**STEP 2** Bring the door to one of the two **Kingdon TIMBER MART** locations with the 1/2 hinge attached. Select your new door and door hardware.

**STEP 3** **Kingdon TIMBER MART** will attach the 1/2 hinge to your new door in the exact position of your existing door, drill the door knob hole and trim the door to the exact size of the existing door for fast and easy installation. Pick up your new door in 1 week.

Materials not included. See in-store for details.

**49<sup>97</sup>**

**WE MANUFACTURE**



Don't see the perfect window in stock? Custom order windows give you options. Details in-store.

timber**windows**   
**Low-E Slider Vinyl Windows**

Energy efficient. Low-maintenance. Also available with optional internal grilles.

36" x 36" #KTS3636BM... **229<sup>99</sup>**

47" x 35" #KTS4735BM... **259<sup>99</sup>**

48" x 48" #KT4848BM..... **319<sup>99</sup>**

**Doorsmith**   
**36" Bristol Single Exterior Door**

24 gauge pre-finished white steel. Opaque half glass with Patina caming. 4-9/16" primed jambs. Code approved. Hardware sold separately. Also available in 32" and 34". May be special order at some locations.

**525<sup>00</sup>**



**Makita**  
**2" Brad Nailer**

18 ga. Slim contact tip design for precise woodworking fastening applications. #AF505N

**109<sup>97</sup>**

**Kingdon TRUSS**  
**6 Panel Pre-Hung Hollow Core Door**

32" x 80". Moulded 6 panel design. Primed finish. Includes header and jambs. Hardware sold separately.

**119<sup>97</sup>**



**Odyssey**  **STANDARD**  
**Sliding Patio Door**

Low-E glass. May not be exactly as shown. May be special order.

5' x 80" ..... **659<sup>00</sup>**  
 6' x 80" ..... **699<sup>00</sup>**



**VELUX**  
**Curb Mount Skylight**

22-1/2" x 46-1/2". Flashing sold separately. #FCM22460005

**199<sup>00</sup>**



**Makita**  
**3-1/4" Planer**

6.5A, 120 VAC. 17,000 RPM. Max planing depth 3/32". #KP0800 O#8182180

**199<sup>97</sup>**

**ALEXANDRIA Moulding**

**Primed MDF Mouldings**

Medium density fibreboard. Moulding styles shown may vary slightly by manufacturer. Brand selection may vary.

**Step Casing**

3/4" x 3-1/2". #MDF0773614. Per piece.....

**15<sup>97</sup>**

**Step Baseboard**

5/8" x 5-1/2". #MDF0353316. Per piece.....

**24<sup>97</sup>**



**Show Both Cards, Get More AIR MILES® Reward Miles** See page 7 for details.



Canada's Building Centre

**BUY NOW  
PAY LATER\***

Apply for financing instantly online at [web.fairstone.ca/timbermart](http://web.fairstone.ca/timbermart) or text

Timbermart 75837 (French 51767)



[web.fairstone.ca/timbermart](http://web.fairstone.ca/timbermart)

Financing provided by:



\*On approved credit. Terms and conditions apply. See store associate for details.

© 2020, TM Fairstone Financial Inc.



**Use Cash Miles here**

Use AIR MILES® Cash Miles at [airmiles.ca](http://airmiles.ca) towards a \$10, \$20 or \$50 TIMBER MART eVoucher that can be used towards your purchase\*. At participating locations only. See page 7 for details.



**Australian Timber Oil**

Amberwood. 3.78L. #CA194574

**49<sup>97</sup>**



**SICO Wood Stain**

Semi-transparent. Walnut Brown. 3.78 L. #234954

**44<sup>97</sup>**



**BENNETT 3 Piece Perfection Brush Set**

1-1/2" & 2". #STAINSET3

**12<sup>97</sup>**



**TREMCLAD Rust Spray Paint**

Gloss. John Deer Green. 340 g aerosol can. #6897623

**7<sup>97</sup>**



**Thompson's WaterSeal**

**Deck Wash**

Makes weathered wood look new. Use before waterproofing. 3.78 L. #6897623

**14<sup>97</sup>**



**LOUISVILLE**

**4' Aluminum Step Ladder**

Medium duty. Lightweight. 225 lb. load capacity. O#8874174

**45<sup>97</sup>**

**Telescoping Paint Roller Extension Pole**

Aluminum & fiberglass. Threaded universal metal tip. Chuck locking device on handle. Extends 6' to 12'. O#0174409

**22<sup>97</sup>**



**TASK**

**9" Skeleton Caulking Gun**

With spout cleaner/puncture tool. Aluminum. #0237065

**8<sup>97</sup>**



**25% OFF**  
**OLYMPIC EXTERIOR STAIN**

*and*

**15% OFF**  
**SUNPROOF EXTERIOR PAINT**

\*15% off applicable on Olympic Stains 79705C, 7961xx, 7956xx, 5640xx, 56400C, 5320xx, 5880xx, 5900xx, 59000C, 55xxxx and Sunproof Exterior Paint. 3.78 L format. Offer is valid from July 8 to 19, 2020 or until stock runs out (whichever comes first). Selection may vary by location.



**Use your TIMBER MART card and Do Not Pay For 6 Months\***

\* (O.A.C.) At participating locations only. See page 7 for details.

# Insulation



Did you know that insulation slows down the movement of heat from hot and cold areas? Not only does it keep your home warmer in the winter, it also helps to keep the home cooler in the summer and provides year round comfort!



## PINK® FIBERGLAS® Insulation



Reduces heating & cooling costs\*\*.

Easy to install.

**R12-15 For 2" x 4" Walls**

3-1/2" x 15" x 47".

Covers 97.9 sq. ft.

Per bundle. #R12X15S.....

**34<sup>95</sup>**

**R20-15 For Attics & Walls**

6" x 15" x 47".

Covers 78.3 sq. ft.

Per bundle. #R20X15S.....

**46<sup>59</sup>**

THE PINK PANTHER™ & © 1964-2020 Metro-Goldwyn-Mayer Studios Inc. All Rights Reserved. The colour PINK is a registered trademark of Owens Corning. © 2020 Owens Corning. All Rights Reserved. \*\*Savings vary. Find out why in the seller's fact sheet on R-values. Higher R-values mean greater insulating power.



## Atticat® PINK® FIBERGLAS® Expanding Blown-In Insulation

Quick and easy. Virtually no mess. 73% recycled content†. Check your local **TIMBER MART** for pricing.

R-Value	R-12	R-20	R-24	R-28	R-32	R-36	R-40	R-50	R-60
Blown inches	4.5	7.5	9.0	10.5	12.0	13.5	14.75	18.5	22.25
Coverage/bag (sq. ft.)	162.9	97.8	81.5	69.8	61.1	54.3	48.9	39.1	32.6
NUMBER OF 30 LB. ATTICAT® PINK® FIBREGLAS® INSULATION BAGS REQUIRED									
SQ. FT.	R-12	R-20	R-24	R-28	R-32	R-36	R-40	R-50	R-60
500	3.1	5.1	6.1	7.2	8.2	9.2	10.2	12.8	15.3
1000	6.1	10.2	12.3	14.3	16.4	18.4	20.4	25.6	30.7
1500	9.2	15.3	18.4	21.5	24.5	27.6	30.7	38.4	46.0
2000	12.3	20.4	24.5	28.7	32.7	36.8	40.9	51.2	61.3

† 73% recycled content is based on the average recycled glass content in all Owens Corning fiberglass batts, rolls and unbonded loosefill insulation manufactured in Canada, SCS certified.

**DEAR CUSTOMER:** Our policy is to provide customer satisfaction. We promise to make every effort to have sufficient advertised items to meet expected customer demand. However, if an advertised item is not available due to unforeseen reasons or space limitations, we will be pleased to either provide a "rain check" or substitute a comparable quality product whenever possible. Some products may not be exactly as shown. We aim for accuracy, but occasionally an error occurs. Any changes that have occurred will be posted in our store to bring it to your attention. The photos shown in this publication are for design ideas only. Before starting any building project, visit your local **TIMBER MART** and check with your local by-law officer to ensure that your design meets the local building code. You may also require a building permit. **ALL SALE PRICES CASH & CARRY.** **TIMBER MART** stores are independently owned and operated and regular retail prices may vary somewhat by location. Please check with your local store for the possible variance of pricing shown and the corresponding savings shown on items advertised in this flyer. **NOT ALL ITEMS CARRIED AT ALL LOCATIONS. WE RESERVE THE RIGHT TO LIMIT QUANTITIES.**

**\*Do Not Pay For 6 months** (promo code 14063). \*On approved credit. Offer applies to a total single purchase of \$299 or more, using your **TIMBER MART** consumer credit card. Financing is provided by Fairstone Financial Inc. and is subject to all the terms and conditions in your cardholder agreement and the credit promotional plan disclosure statement (collectively the "Account Agreement"). Finance Charges will accrue on the purchase from the beginning of the credit promotional period of 6 months, but no minimum payments will be due during the credit promotional period. However, if you pay the purchase price in full by the expiration date of the credit promotional period, all of the accrued Finance Charges will be waived and no Finance Charges will be assessed on the purchase. Otherwise, if you choose to not pay the purchase price in full by the expiration date of the credit promotional period, all of the accrued Finance Charges will be assessed at that time. On termination or expiry of the credit promotional plan (or for purchases that are not part of the credit promotional plan), the standard APR of 29.99% and the terms of the Regular Credit Plan will apply to all outstanding balances owing. This offer cannot be used for previous purchases and cannot be combined with any other offers, promotions or special incentive programs. Certain terms and conditions apply. See store and Account Agreement for further information.



## We've Got ROCKWOOL ComfortBatt Insulation

Come in and talk to one of our Insulation Experts about the benefits of ROCKWOOL ComfortBatt thermal home insulation. Fire resistant and water repellent. Easy to cut, fit and install. Competitively priced to fit your budget.

**AIR MILES® Reward Miles:** Get 1 Mile for every \$15 spent, not cumulative, before taxes, on goods/services paid for at time of purchase. Exclusions: purchases of gift cards, delivery charges, wholesale and house account.

**\*Show Both Cards And Get More Miles:** A **TIMBER MART** Card, an **AIR MILES®** Card and registration in the **TIMBER MART EARN MORE** program are required to get Miles. Use your **TIMBER MART** Card and present your **AIR MILES®** Card when shopping at a participating **TIMBER MART** store. Visit [www.timbermart.ca](http://www.timbermart.ca) for details and to register, or visit a participating **TIMBER MART** store for an **EARN MORE** application. Valid only for purchases made on the Regular Credit Plan. Purchases on Promotional Credit Plans and Commercial Accounts are not eligible for this offer. Get one Mile with every \$15 (including taxes) retail cash and carry purchase (excluding gift cards). **AIR MILES®** Reward Miles will be posted to a Collector's Account within 3 months of purchase.



**CertainTeed** **CGC**  
Lightweight Drywall  
1/2" x 4' x 8'.

Value Priced

Contact us for current competitive price.



**IRWIN**  
Industrial Tools  
Drywall Saw  
6.5" blade length. Rigid blade, hardwood handle.  
#5342472

**5<sup>97</sup>**



**CGC**  
Dust Control Drywall Compound  
Ready-mixed. 2L. 2.1 kg.  
#21KGDC

**12<sup>99</sup>**



**<DUPONT>**  
Cladmate CM20 Rigid Insulation  
R-value of 5.0 per inch.  
1" x 2' x 8' Per panel. #1SM... **15<sup>99</sup>**  
1.5" x 2' x 8' Per panel. #2SM... **23<sup>99</sup>**



**DUCHESE**  
Vapour Barrier  
500 Poly. CGSB. 500 sq. ft. per roll. 102" x 59'.  
Per roll. #6MIL500U

**34<sup>95</sup>**

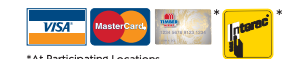


**14" Access Panel**  
Can be flush mounted or surface mounted, no framing required. White.  
O#6856512

**11<sup>97</sup>**

**\*AIR MILES® Cash Reward Partner:** Use Cash Miles in your Cash Account online in increments of 95 Cash Miles for every \$10 worth of value from participating **AIR MILES** Reward Partners to a maximum of \$750 per day. eVouchers can be used at participating Reward Partners' locations in Canada only. See specific eVoucher reward page for details and any restrictions. You must have accumulated sufficient Miles in your Cash Account in order to use Miles towards eVoucher online at [airmiles.ca/cash](http://airmiles.ca/cash). All Rewards offered are subject to the Terms and Conditions of the **AIR MILES** Reward Program, are subject to change and may be withdrawn without notice. For complete details, visit [airmiles.ca](http://airmiles.ca).

© TM† Trademarks of AM Royalties Limited Partnership used under license by LoyaltyOne, Co. and **TIM-BR MARTS** Ltd.†



\*At Participating Locations

**Show Both Cards, Get More AIR MILES® Reward Miles** See this page for details.



Canada's Building Centre

# Garage Solutions

Home & Garage Plans  
Are Just A Click Away  
[timbermart.ca](http://timbermart.ca)

## TIMBER MART Garage Packages

**Our Basic Garage Package Includes:** Structural wall system with top and bottom plates, large and small headers, gasket, studs and wall sheathing. Also includes roof system with 25 year shingles, 9' x 7' garage door for single car units or 16' x 7' garage door for double car units, entry door and hardware, 36" x 24" window, and all required nails. Footing, foundation and floor, as well as finishing items, such as siding and interior finishing products, are priced separately.



### 9' x 7' ThermoCraft Garage Door

1-1/8" thick. 10.40 R-value. Quality construction. Excellent thermal efficiency. Includes tracks, hinges, fasteners and weatherstripping. Each.

# 657<sup>00</sup>

GARAGE SIZE	YOU PAY ONLY	VINYL SIDING
12' x 24' With 9' x 7' door.	3597 <sup>00</sup>	999 <sup>00</sup>
16' x 20' With 9' x 7' door.	3895 <sup>00</sup>	1187 <sup>00</sup>
16' x 24' With 9' x 7' door.	4179 <sup>00</sup>	1259 <sup>00</sup>
20' x 24' With 16' x 7' door.	5229 <sup>00</sup>	1369 <sup>00</sup>
24' x 24' With 16' x 7' door.	5789 <sup>00</sup>	1455 <sup>00</sup>
28' x 24' With 16' x 7' door.	7109 <sup>00</sup>	1599 <sup>00</sup>



**WE DESIGN** **WE MANUFACTURE**

Your Shed/Garage  
Can Be Built Quicker  
Then You Think

**STOCK TRUSSES AVAILABLE**  
4/12 pitch. 1' overhang. Great for sheds and garages.  
**CALL IN FOR SIZES AND PRICING**

Meet Our TRUSS *Designers*



**WE ARE THE BEST PLACE FOR LUMBER** With **TIMBER MART** locations from coast to coast, our huge buying power saves you money. We have the quality lumber you need at the right price.



## Kingdon **TIMBER MART**

Manufacturers of Floor & Roof Trusses

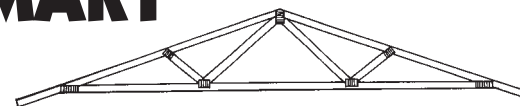
1873 8th Line, Lakefield

**705-652-3361 or 705-652-8188**

309 Lansdowne Street East, Peterborough

**705-749-1144 FAX: 705-749-1388**

**EMAIL:** don@kingdontruss.com **WEB:** kingdontimbermart.ca  
ptbo@kingdontruss.com



**STORE HOURS:**

Mon-Fri: 7:00am-5:30pm  
Sat: 8:00am-4:00pm • Sun: Closed  
Visa, MasterCard, TIMBER MART Card & Debit Accepted