

PRICES IN EFFECT UNTIL NOVEMBER 15, 2020



Canada's **Building** Centre®

kingdontimbermart.ca

Our Lowest Price Of The Year!

Makita
37 pce.
Driver
Bit &
Socket Kit
#T-03078



25⁹⁷



3M
10% OFF
Assorted In-Stock
Command Hooks

CHRISTMAS PROJECTS



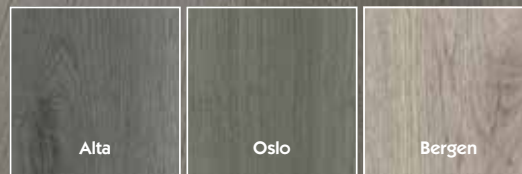
Energizer
16-Pack AA Batteries
15 V. Energizer Max. O#3044559

14⁹⁷



Oscillating Halogen Heater
400/800 W. 14" dish. Tip-over and overheat protection. #9948605

46⁹⁷



5mm Arctik SPC Flooring

Floating installation with I4F « Drop Lock » system. Install on all levels, waterproof product. 6" X 48" SPC flooring including 1mm EVA pad attached. Choose from #9101 Alta, #9102 Oslo or #9108 Bergen. Sold in full cartons only. Priced per sq. ft.

269
Per Sq. Ft.



The perfect gift every time

TIMBER MART Gift Cards available from \$10 to \$500. Purchase in-store or online timbermart.ca

SPECIAL FEATURE:
PROJECT OF THE MONTH
DOORS & TRIM



Canada's **Building Centre**

Finance in a Flash

Make a purchase with your TIMBER MART credit card Oct. 1 - Nov. 30, 2020 for the chance to win up to a \$5,000 credit*. Plus, earn a bonus entry by taking a selfie with your purchase and submitting to Promo.Fairstone.ca/flash

*OAC. Terms and conditions apply. See store associate for details. Visit Fairstone.ca/Flash for full contest rules.

Door Exchange

We have the biggest selection of interior doors

It's fast, easy and can save you up to 75% of the cost to replace your interior doors the old fashion way.

STEP 1 Remove the door from the hinge by knocking out the hinge pin. This is easiest to do with two people.

STEP 2 Bring the door to one of the two Kingdon TIMBER MART locations with the 1/2 hinge attached. Select your new door and door hardware.

STEP 3 Kingdon TIMBER MART will attach the 1/2 hinge to your new door in the exact position of your existing door, drill the door knob hole and trim the door to the exact size of the existing door for fast and easy installation. Pick up your new door in 1 week.

Materials not included. See in-store for details.

49⁹⁷

WE MANUFACTURE



Live Edge Pine Oval
36" x 22" x 2". White Pine. Ovals vary in thickness from 1.5"-1.75". Lengths vary from 30"-36" long. Widths vary from 18"-24" wide. #25001

89⁹⁷



"U" LEGS
15" High Black
2 pack. 15" x 15" x 3". Black powder coated. Hardware included. Wood table top sold separately. #31101

99⁹⁷



freud
7-1/4" Framing
Saw Blade

40 Tooth. Smooth, clean cuts. Super thin kerf. #DC740A

19⁹⁷



**3-Piece
Oscillating Tool
Blade Kit**

Perfect for heavy-duty jobs. Exchangeable. #1070502

29⁹⁷



Makita
Variable Speed
Jig Saw

3.9A. 3 settings. Lock-on button. #4329K

95⁹⁷



ALEXANDRIA Moulding
Primed MDF Moulding
Step Casing

3/4" x 3-1/2" x 14'3"
#MDF0773614
Per Lin. Ft. **17⁹⁹**

Step Baseboard
5/8" x 5-1/2" x 14'
#MDF0573714
Per Lin. Ft. **41⁹⁹**



CGC
Radar Suspended
Ceiling Tile

2' x 4' x 5/8". Carton of 8. #2310. #RADAR2310
Priced per carton.

59⁹⁹



CGC
Suspended
Ceiling Grid

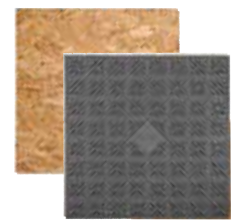
Fire rated.

2' Cross Tee
#XA2F **1⁸⁹**

4' Cross Tee
#XA4F **3⁶⁹**

10' Wall Angle
#XAW **5⁹⁹**

12' Main Tee
#XAMF **10⁹⁹**



BARRICADE
SUBFLOOR PRODUCTS

**Barricade
Air Plus Subfloor**
R-value 1.7. #SUBFLO22
Priced per panel.

7⁹⁹



FOREMOST
**2-Piece
High
Efficiency
Toilet**

6 LPF. Round. White.
Chrome tank lever.
#TT-8207-WL3

109⁹⁷



MOEN
Bathroom Faucet
Spot resist, brushed nickel.
Low arc. O#7123458

119⁹⁷

LUXO
MARBLE
MARBLE • MARMOLE

Smally Vanity

2 piece. Includes 1 white synthetic
marble sink, single hole with overflow.
24.5" x 19". Height 33.5". #2419SMALLYC

359⁹⁷



MOEN
**Charmant
One-Handle High
Arc Kitchen Faucet**
Chrome finish. #87446

139⁹⁷



BLANCO
**Top Mount Double
Kitchen Sink**

31-1/2" x 20-1/2" x 7".
Brushed Satin Stainless
Steel. #401168

159⁹⁷



cantech

**3-Pack PaintPro
Painters Tape**

Medium quick stick.
24 mm x 50 m. O#1242684

6⁹⁷

PPG SICO MOSAIC

**15%
OFF
PRIMER***

*15% off applicable on PPG GoPrime #150-135,
#160-135, #170-135, #190-135, #200-135, Sico
SealGrip Primer #17-9xxx, Mosaic Primer #T20-019
#T20-059. 3.78 L format. Offer valid on regular
prices from November 4-15, 2020 or until
stock runs out (whichever comes
first). Valid at participating
TIMBER MART locations only.
Brand selection may vary
by store location.

Sico is registered trademark
of PPG Architectural
Finishes, Inc. The PPG
Logo is a registered
trademark of PPG
Industries Ohio, Inc.
© 2020 PPG Industries,
Inc. All rights reserved.

DEAR CUSTOMER: Our policy is to provide customer satisfaction. We promise to make every effort to have sufficient advertised items to meet expected customer demand. However, if an advertised item is not available due to unforeseen reasons or space limitations, we will be pleased to either provide a "rain check" or substitute a comparable quality product whenever possible. Some products may not be exactly as shown. We aim for accuracy, but occasionally an error occurs. Any changes that have occurred will be posted in our store to bring it to your attention. The photos shown in this publication are for design ideas only. Before starting any building project, visit your local **TIMBER MART** and check with your local by-law officer to ensure that your design meets the local building code. You may also require a building permit. ALL SALE PRICES CASH & CARRY. **TIMBER MART** stores are independently owned and operated and regular retails may vary somewhat by location. Please check with your local store for the possible variance of pricing shown and the corresponding savings shown on items advertised in this flyer. NOT ALL ITEMS CARRIED AT ALL LOCATIONS. WE RESERVE THE RIGHT TO LIMIT QUANTITIES.

***Do Not Pay For 6 months** (promo code 14063). *On approved credit. At participating locations only. Offer applies to a total single purchase of \$999 or more, using your **TIMBER MART** consumer credit card. Financing is provided by Fairstone Financial Inc. and is subject to all the terms and conditions in your cardholder agreement and the credit promotional plan disclosure statement (collectively the "Account Agreement"). Finance Charges will accrue on the purchase from the beginning of the credit promotional period of 6 months, but no minimum payments will be due during the credit promotional period. However, if you pay the purchase price in full by the expiration date of the credit promotional period, all of the accrued Finance Charges will be waived and no Finance Charges will be assessed on the purchase. Otherwise, if you choose to not pay the purchase price in full by the expiration date of the credit promotional period, all of the accrued Finance Charges will be assessed at that time. On termination or expiry of the credit promotional plan (or for purchases that are not part of the credit promotional plan), the standard APR of 29.99% and the terms of the Regular Credit Plan will apply to all outstanding balances owing. This offer cannot be used for previous purchases and cannot be combined with any other offers, promotions or special incentive programs. Certain terms and conditions apply. See store and Account Agreement for further information.

AIR MILES® Reward Miles: Get 1 Mile for every \$15 spent, not cumulative, before taxes, on goods/services paid for at time of purchase. Exclusions: purchases of gift cards, delivery charges, wholesale and house account.

Show Both Cards And Get More Miles: A **TIMBER MART** Card, an **AIR MILES®** Card and registration in the **TIMBER MART EARN MORE** program are required to get Miles. Use your **TIMBER MART** Card and present your **AIR MILES®** Card when shopping at a participating **TIMBER MART** store. Visit www.timbermart.ca for details and to register, or visit a participating **TIMBER MART** store for an **EARN MORE** application. Valid only for purchases made on the Regular Credit Plan. Purchases on Promotional Credit Plans and Commercial Accounts are not eligible for this offer. Get one Mile with every \$15 (including taxes) retail cash and carry purchase (excluding gift cards). **AIR MILES®** Reward Miles will be posted to a Collector's Account within 3 months of purchase.

***AIR MILES® Cash Reward Partner:** Use Cash Miles in your Cash Account online in increments of 95 Cash Miles for every \$10 worth of value from participating **AIR MILES** Reward Partners to a maximum of \$750 per day. eVouchers can be used at participating Reward Partners' locations in Canada only. See specific eVoucher reward page for details and any restrictions. You have accumulated sufficient Miles in your Cash Account in order to use Miles towards eVoucher online at airmiles.ca/cash. All Rewards offered are subject to the Terms and Conditions of the **AIR MILES** Reward Program, are subject to change and may be withdrawn without notice. For complete details, visit airmiles.ca.

®/™/† Trademarks of AM Royalties Limited Partnership used under license by LoyaltyOne, Co. and **TIM-BR MARTS** Ltd.†

TIMBER MART **PROUD SPONSOR**



*At Participating Locations

Purdy
PROFESSIONAL PAINTING TOOLS

**15%
OFF**

**PURDY
PAINT BRUSHES**



Show Both Cards, Get More AIR MILES® Reward Miles See this page for details.



Canada's **Building Centre**

**BUY NOW.
PAY LATER.**

Apply for financing instantly online at web.fairstone.ca/timbermart or text Timbermart 75837 (French 51767)



web.fairstone.ca/timbermart

Financing provided by:



*On approved credit. Terms and conditions apply. At participating locations only. See store associate for details. © 2020, TM Fairstone Financial Inc.

Use Cash Miles here

Use AIR MILES® Cash Miles at airmiles.ca towards a \$10, \$20 or \$50 TIMBER MART eVoucher that can be used towards your purchase². At participating locations only. See page 3 for details.

GET READY FOR
Winter

We are your local
 Husqvarna DEALER



10% OFF

Husqvarna SNOW BLOWERS

OR GET

15% OFF SNOW BLOWERS WITH CHAINSAW PURCHASE*

*Purchase a Husqvarna chainsaw at retail price and receive 15% off of a Husqvarna snow blower. Cannot be combined with other promotions. In-stock items only.



PINK® FIBERGLAS® Insulation

R12-15 For 2" x 4" Walls

3-1/2" x 15" x 47". Covers 97.9 sq. ft. Priced per bundle. #R12X15S..... **35⁷⁷**

R12-23 For 2" x 4" Walls

3-1/2" x 23" x 47". Covers 150.1 sq. ft. Priced per bundle. #R12X23S..... **54⁸⁵**



THE PINK PANTHER® & © 1964-2020 Metro-Goldwyn-Mayer Studios Inc. All Rights Reserved. The colour PINK is a registered trademark of Owens Corning. © 2020 Owens Corning. All Rights Reserved.

R20-15 For Attics & Walls

6" x 15" x 47". Covers 78.3 sq. ft. Priced per bundle. #R20X15S..... **47⁶⁸**

R20-23 For Attics & Walls

6" x 23" x 47". Covers 120.1 sq. ft. Priced per bundle. #R20X23S..... **73¹³**



«DUPONT»

Syrofoam SM Insulation

R-value of 5.0 per inch.

1" x 2' x 8' Per panel. #1SM..... **14⁹⁹**
1.5" x 2' x 8' Per panel. #15SM... **22⁹⁹**



CertainTeed CGC

Lightweight Drywall

1/2" x 4' x 8'.

Value Priced

Contact us for current competitive price.



DUCHESE

Vapour Barrier

500 Poly. CGSB. 500 sq. ft. per roll. 102" x 59'. #6MIL500U. Priced per roll.

32⁹⁹



Kingdon TIMBER MART

Manufacturers of Floor & Roof Trusses

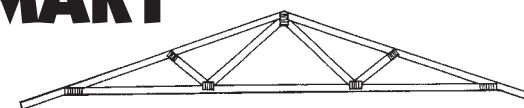
1873 8th Line, Lakefield

705-652-3361 FAX: 705-652-8188

309 Lansdowne Street East, Peterborough

705-749-1144 FAX: 705-749-1388

EMAIL: LKFD@kingdontruss.com WEB: kingdontimbermart.ca
ptbo@kingdontruss.com



STORE HOURS:

Mon-Fri: 7:00am-5:30pm

Sat: 8:00am-4:00pm • Sun: Closed

Visa, MasterCard, TIMBER MART Card & Debit Accepted